

PORT OF ENTRY

THE PORT OF MACKAY

• The Port of Mackay, Queensland is an Australian-PORT OF ENTRY

- It is the closest entry to -
The Whitsundays, Great Barrier Reef
- Notice must be given of impending arrival
- If you are a yacht captain, owner or agent, you must ensure your vessel complies with FPOE determinations.
- International vessels arriving in Mackay from outside of Australia are subject to-

CUSTOMS AND IMMIGRATION

[AUSTRALIAN BORDER FORCE \(ABF\)](#)

BIOSECURITY

[AUSTRALIAN GOVERNMENT DEPARTMENT OF AGRICULTURE, FISHERIES AND FORESTRY](#)

MACKAY MARINA

Superyacht berth and fuel packages are available to entice you to extend your stay at Mackay Marina.

Provisioning and Charter services are also at hand, let us know in advance of your pending arrival/departure - superyachts@mackaymarina.com

Assistance with arrival forms, protocols, and berth bookings - reception@mackaymarina.com

REFERRALS

YACHT AGENT

- Immigration and Foreign crew visas
- Cruising / Control Permits
- Maintenance & Refit Temporary Imports
- Import / Export Declarations
- Biosecurity

FOREIGN FLAGGED SUPERYACHT CHARTERS

- Fiscal representation for Superyachts chartering in Australia
- Goods and services tax (GST) obligations



CUSTOMS & IMMIGRATION

Whether you are a yacht crew, a returning resident, migrating to Australia or a visitor, you need to comply with entry requirements and have a valid visa and passport.

Yachts must give pre-arrival notice and clearly display the International Pratique Q-flag on arrival.

LINKS

[AUSTRALIAN BORDER FORCE \(ABF\)](#)

[PRE-ARRIVAL NOTICE](#)

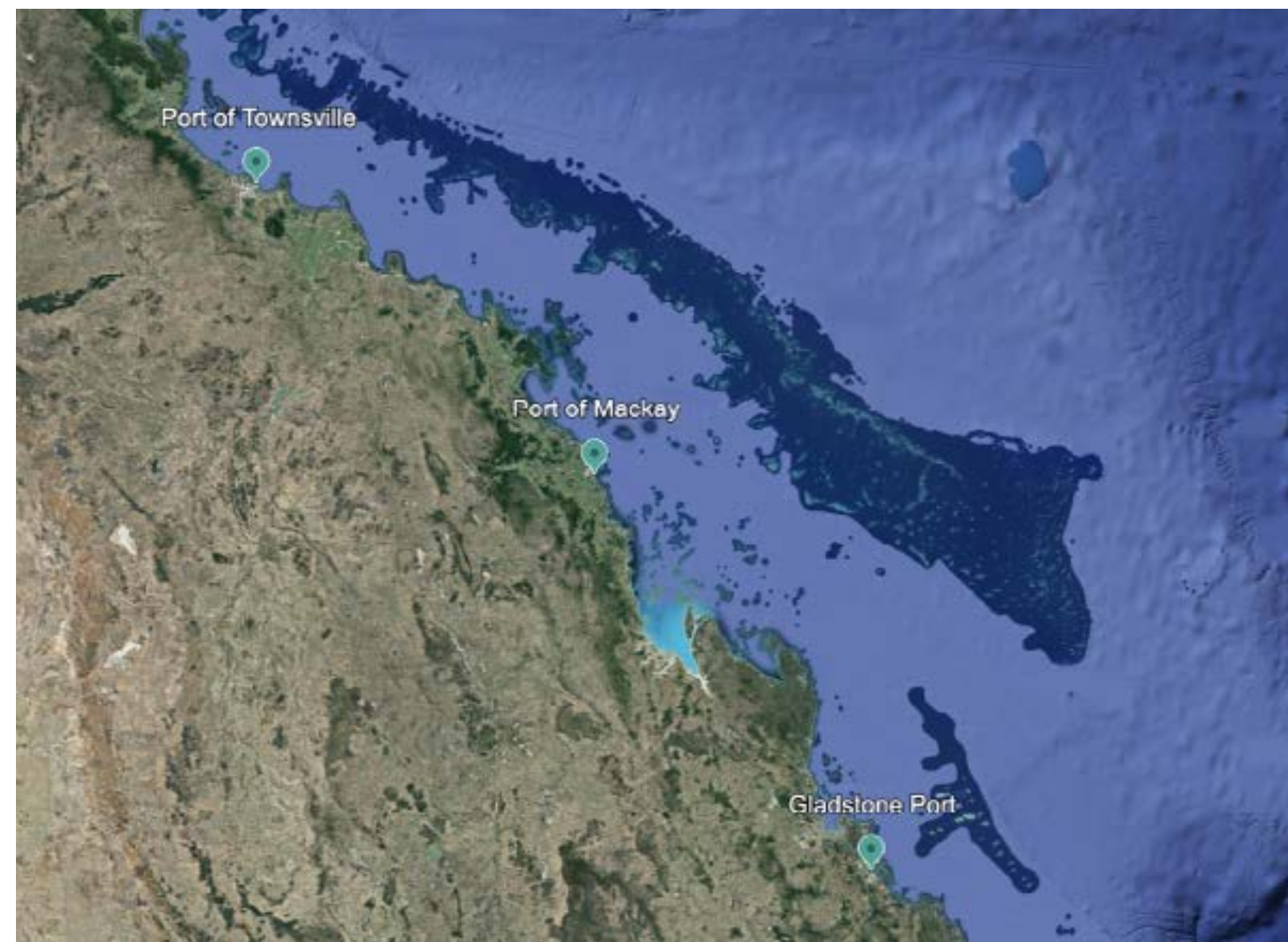
[SUPERYACHTS](#)

[YACHTS & PLEASURE CRAFT](#)

[SMALL CRAFT ARRIVAL REPORT](#)

[INCOMING PASSENGER CARD EXAMPLE](#)

PERMITTED VESSELS AND GOODS
• Non-commercial vessels
• Commercial vessels
• Passenger vessels
• Commercial vessel baggage
• Freight containers
• Inorganic bulk goods
• General goods, and waste
• Non-commercial vessel baggage and waste



BIOSECURITY

Biosecurity is the way to stop the introduction and spread of harmful organisms such as viruses, bacteria, animals, plants, pathogens, and insects into the country. Australian laws and regulations are extremely strict.

REMOVAL OF BIOSECURITY WASTE

- [Biosecurity](#) officers will conduct inspections of arriving vessels.
 - Mackay Marina staff will facilitate the removal of Biosecurity waste in line with regulations and health and safety standards.
- *Charges apply for this service.

LINKS

[AUSTRALIAN GOVERNMENT - DEPARTMENT OF](#)

[AGRICULTURE, FISHERIES AND FORESTRY](#)

[BIOSECURITY RULES & REGULATIONS](#)

[PRE-ARRIVAL REPORT \(PAR\)](#)

[BIOSECURITY CHECKLIST](#)

[BIOSECURITY VISUAL DIAGRAM](#)

[MARS COMMERCIAL LOGIN](#)

[MARS OFFLINE FORMS](#)

Keep informed on the following -

- Galley Stores
- General Waste
- Personal items
- Medical Supplies
- Pets
- Alcohol
- Pests
- Plants and Timber
- Firearms
- Hazardous waste

**This information is a guideline only, refer to the links for the most up to date information.



POSITION

Latitude: 21°07'S

Longitude: 149°14'E

RADIO

VHF Channel 16

CHARTS OF AREA

AUS 250, 823 and 821

BOARDING STATION FOR ARRIVAL

Contact pier Master on CH16- for anchorage prior to clearance.

PORT DRAUGHTS

Mackay (Outer Harbour)

MHWS: 5.28m, ML: 4.06m

MLWN: 1.94m, HAT: 6.41m

Mackay Marina LWD

Channel: 4.5m Berth: 3.5m

DEPARTMENT OF HOME AFFAIRS

Smallcraft Officer, Customs House

Mulherin Drive

Mackay Marina

Mackay Qld 4740

24 hrs: +61 7 4965 7100

Fax: +61 7 4965 7199

Email: shipping.mackay@abf.gov.au

DEPARTMENT OF AGRICULTURE

Customs House

Mulherin Drive

Mackay Marina

Mackay Qld 4740

Office hours: +61 7 4955 9600

After hours: +61 427 861 911